

**Port & Company® Infant Core Fleece Full-Zip Hooded Sweatshirt. CAR78IZH**



Our popular 7.8-ounce hooded sweatshirt designed for the smallest family members. Color-coordinated with our adult PC78, 7.8-ounce Core Fleece Sweatshirts.

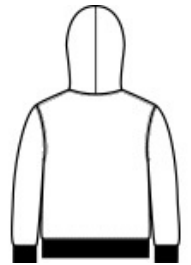
- 7.8-ounce, 50/50 cotton/poly fleece
- Air jet yarn for softness
- No draw cord at hood

**CARE INSTRUCTIONS**

Machine wash cold, inside out with like colors, only non-chlorine bleach when needed. Tumble dry medium. Do not iron.



front



back

**HOW TO MEASURE**



**CHEST WIDTH**

Measure under the arm and around the fullest part of the chest with arms down, keeping tape horizontal.

**SIZE CHART**

	06M	12M	18M
Weight (lbs)	12-17	17-22	22-27
Height	23-27	27-28	29-31

**COLOR INFORMATION**



Athletic Heather  
PMS COOL GRAY  
7C



Candy Pink  
PMS 189C



Jet Black  
PMS NTR BLACK  
C



Navy  
PMS 2380C



Red  
PMS 200C



Royal  
PMS 2133C