



New Era® Ladies STS 1/2-Zip LNEA541

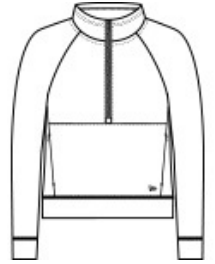


A modern twist on heritage style, this 1/2-zip is a perfect layering piece with its smooth face, jacquard interior and pique-like texture.

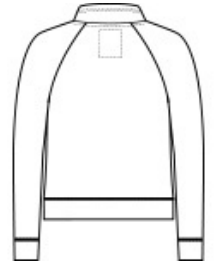
- 7.8-ounce, 56/44 cotton/poly double knit jacquard
- Heat transfer label for tag-free comfort
- Metaluxe® zipper
- Front pouch pocket with invisible side zippers
- Embroidered New Era flag logo on pocket

CARE INSTRUCTIONS

Machine Wash Cold With Like Colors. Do Not Use Fabric Softener. Do Not Bleach. Tumble Dry Low. Remove Promptly. Cool Iron If Necessary.

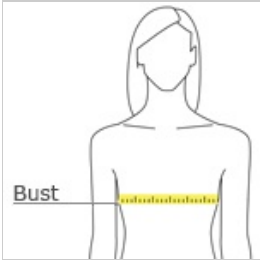


front



back

HOW TO MEASURE



BUST

Measure under the arm and around the fullest part of the bust with arms down, keeping tape horizontal.

SIZE CHART

	XS	S	M	L	XL	2XL	3XL	4XL
Size	2	4/6	8/10	12/14	16/18	20/22	24/26	28/30
Bust	32-34	35-36	37-38	39-41	42-44	45-47	48-51	52-55

COLOR INFORMATION



Black
PMS BLACK C



Fan White
PMS NO MATCH



Graphite
PMS 7540C